



DRAWING SUBMISSION REQUIREMENTS FOR LPG CONTRACTORS



**E-ENGINEERING DRAWING SUBMISSIONS NOT
COMPLYING TO FOLLOWING REQUIREMENTS SHALL BE
REJECTED FROM SYSTEM
IN EFFECT**

FROM 16TH FEBRUARY 2014

THIS RULE WILL APPLY TO

- ✓ **EXISTING/CURRENT SUBMISSIONS**
- ✓ **NEW SUBMISSIONS**



1. NUMBER OF FILES

The submission shall have only 1 attached file for the following 5 categories

✓ LPG System

2. NAME OF FILES

✓ 98765XLPGSYSTEM_CORNERSHOP

Where

- 98765 is last five digits of your APPLICATION NUMBER
- CORNERSHOP is your COMPANY NAME

DO NOT name your files in any other manner

✗ Pdf.

✗ Untitled.

✗ 16feb2014

✗ GAS.

✗ Civildefence

✗ Approval

✗ CORNERSHOP.

✗ residential



3. CONTENT OF FILES

LPG SYSTEM

ONE FILE for LPG System shall have the pages / details as follows

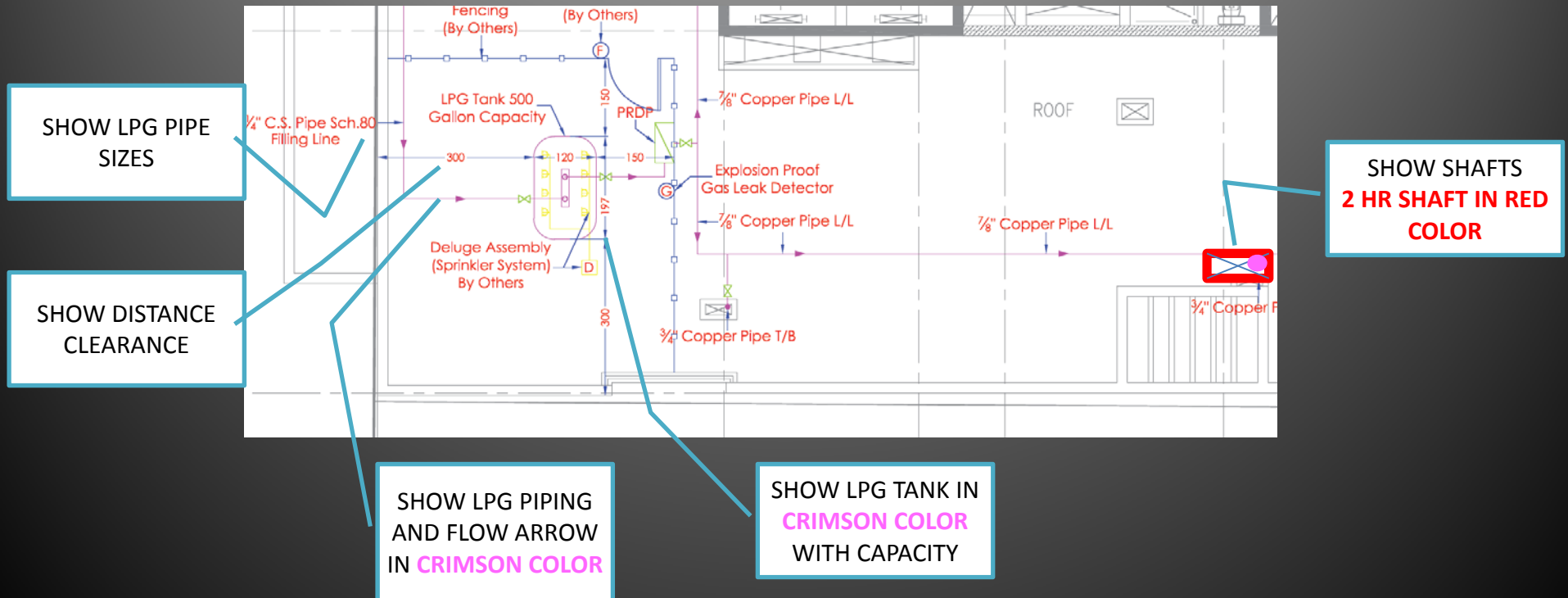
- ✓ Cover page
- ✓ Floor plans showing LPG pipe network, Control Valves, supply points, Gas detectors, Emergency switches, Control Panel, Filling Points (All in 1 Page for each floor)
- ✓ Location of LPG tanks with separation area clearly marked around the tanks.
- ✓ Pipe Type and sizes shall be shown clearly next to piping
- ✓ Shaft Fire rating shall be shown clearly.
- ✓ Riser Diagram showing schematic (1 Page)
- ✓ Legend shall be shown on each page.
- ✓ Typical Equipment/Device Installation Details, including LPG Tank , Piping through shafts, Fill Line Connection, detectors installation, containment arrangement, Control Panel installation etc with dimensions and sections. (1 Page)

COMBINED
TOGETHER IN
**ONE "LPG
SYSTEM" FILE**
OF UPTO 50Mb

1. CONTENT OF FILES

LPG SYSTEM

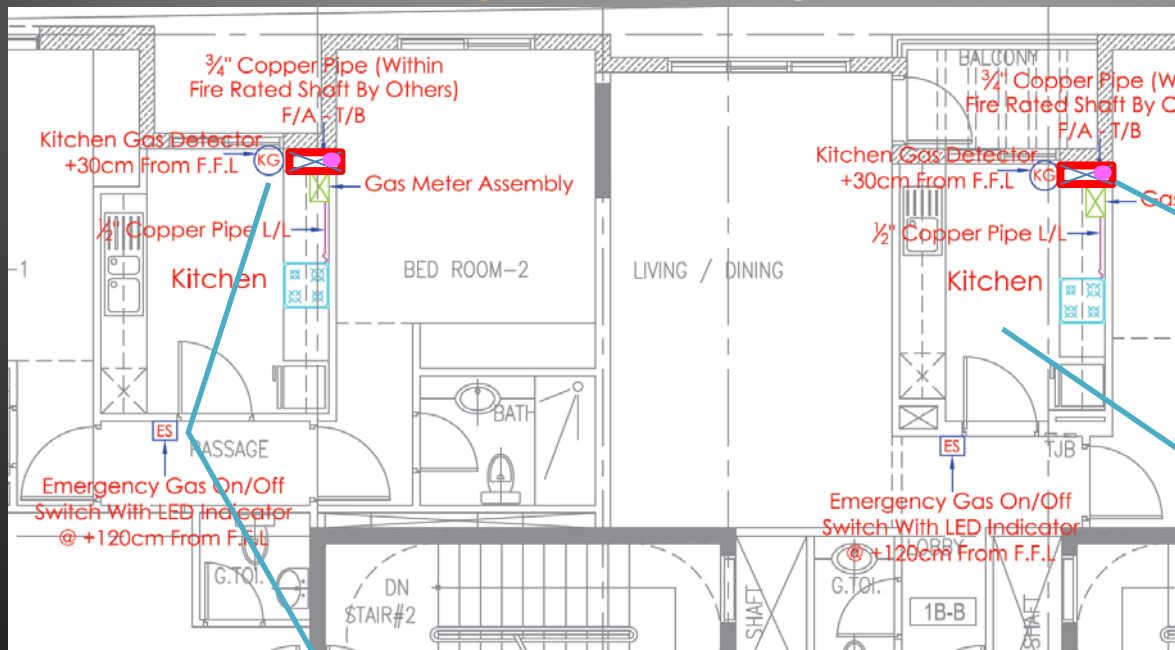
ONE FILE for **LPG System** drawing shall be color coded as follows



1. CONTENT OF FILES

LPG SYSTEM

ONE FILE for LPG System drawing shall be color coded as follows

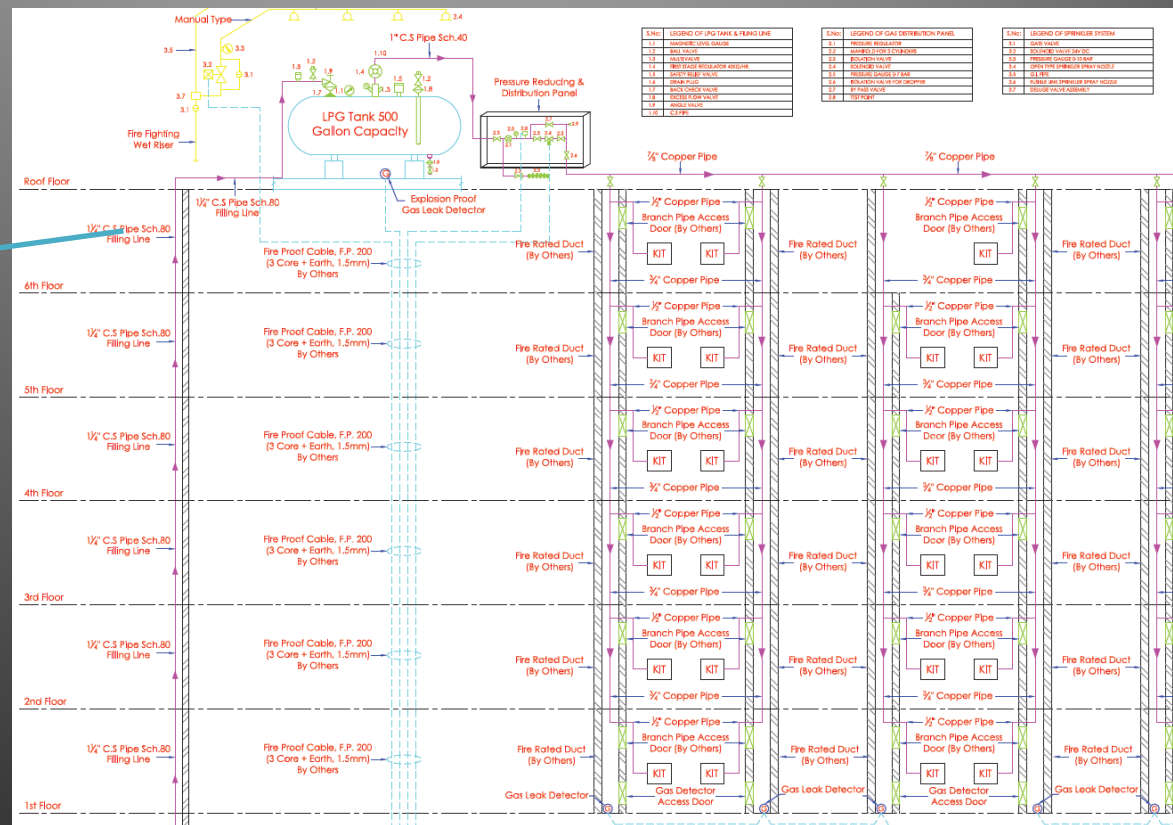


SHOW LPG
EMERGENCY
SWITCHES,
DETECTORS

SHOW SHAFTS
2 HR SHAFT IN RED
COLOR

SHOW KITCHEN
LPG PIPING IN
CRIMSON COLOR

RISER SCHEMATIC should be provided.



SHOW TANK
 CAPACITY, PIPING
 THROUGH SHAFTS,
 VALVES, GAUGES,
 PRDPS WITH
 LEGEND.



COMMON AND BASIC REQUIREMENTS

- ✓ a. All drawings should be to scale (1:100, 1:150)
- ✓ b. Mention e-engineering **application Number on the cover page.**

| DRAINAGE APPROVAL | ROAD APPROVAL | CIVIL DEFENSE APPROVAL |
|-------------------------------|---------------|-----------------------------|
| | | PS-AAD-EEN-11-02-2014-98765 |
| MUNICIPALITY STAMP & APPROVAL | | MUNICIPALITY CONDITIONS |
| | | 1 |
| | | 2 |

PROVIDE APPLICATION
NUMBER ON COVER
PAGE

- ✓ C. Provide Owners letter for usage of LPG, specially for Industrial projects

DO NOT submit drawings

- ✗ Without Scale
- ✗ Without check marking
- ✗ Without Reading checklist
- ✗ Without Cover page
- ✗ Without Siteplan
- ✗ Without Application numbers
- ✗ Without reading e-Engineering user manual
- ✗ Without reading /understanding requirements of this presentation



**Hope you comply to these requirements
And help us to serve you better
And FASTER**

Download UAE Fire and Life Safety Code of Practice

http://www.dcd.gov.ae/download/preventionsafety/UAE_FIRE_AND_LIFE_SAFETY_CODE_OF_PRACTICE.pdf

Download e-engineering user manual

http://www.dcd.gov.ae/download/E_ENGINEERING_HELP_MANUAL.pdf